

Future of Transportation Survey Findings

Transportation Policy Board • May 13, 2021



Survey purpose



Explore attitudes about and use of the existing regional transportation system.

Outline transportation **desires, needs, and priorities** of the general public.

Provide regional decision makers with **input from a broad cross-section of the public.**

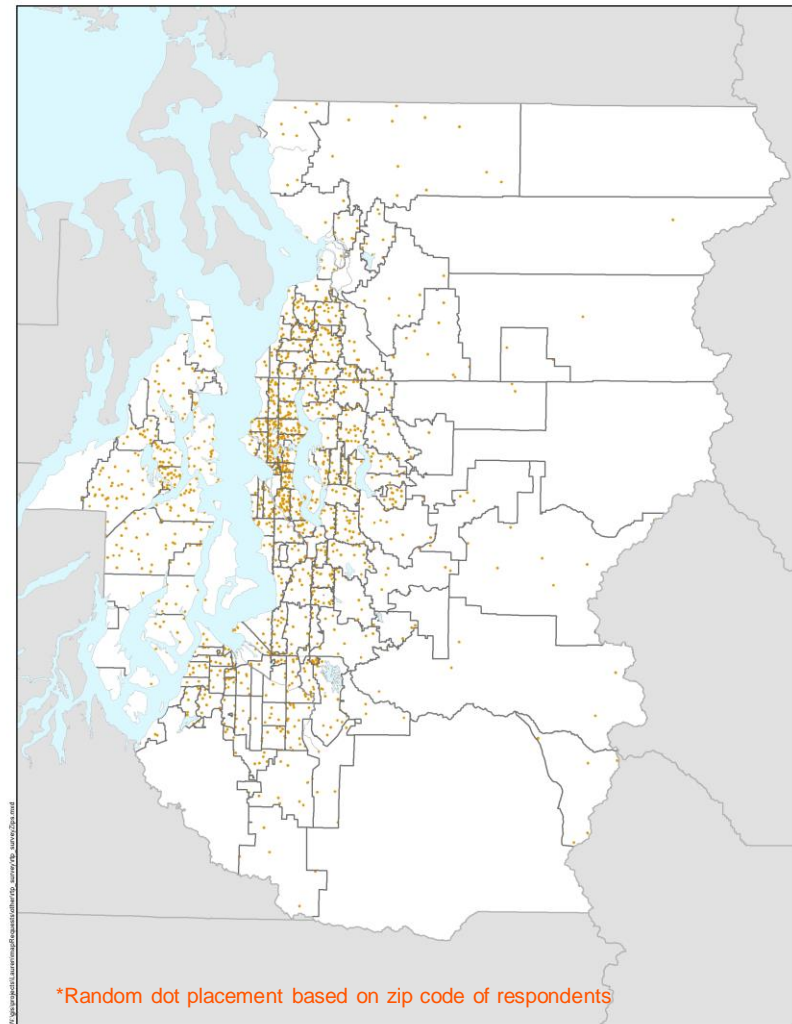


Survey method

Survey fielded March 9 to April 4,
2021

1,921 people completed the survey

242 responses in languages other
than English (Spanish, simplified
Chinese, traditional Chinese,
Vietnamese)



Reliable, well-maintained roads and highways (50-72%), and reliable, well-connected transit service for local neighborhoods (40-54%) are top priorities across the region

Top priorities for a complete and reliable transportation system:

King	Pierce	Snohomish	Kitsap
<ol style="list-style-type: none"> 1. High speed rail connecting to places in and outside the region (57%). 2. Reliable, well-maintained roads and highways (55%). 3. Reliable, well-connected transit service for local neighborhoods (54%). 4. Expanded, faster transit service between major destinations across the region (48%). 	<ol style="list-style-type: none"> 1. Reliable, well-maintained roads and highways (72%). 2. High speed rail connecting to places in and outside the region (42%). 3. Reliable, well-connected transit service for local neighborhoods (41%). 4. Expanded, faster transit service between major destinations across the region (41%). 	<ol style="list-style-type: none"> 1. Reliable, well-maintained roads and highways (61%). 2. High speed rail connecting to places in and outside the region (54%). 3. Reliable, well-connected transit service for local neighborhoods (46%). 	<ol style="list-style-type: none"> 1. Reliable, well-maintained roads and highways (50%). 2. More direct, faster ferry options (43%). 3. Reliable, well-connected transit service for local neighborhoods (40%).



Transit service is the highest-rated infrastructure across the region among those who responded

Road and infrastructure quality *near where people live*:

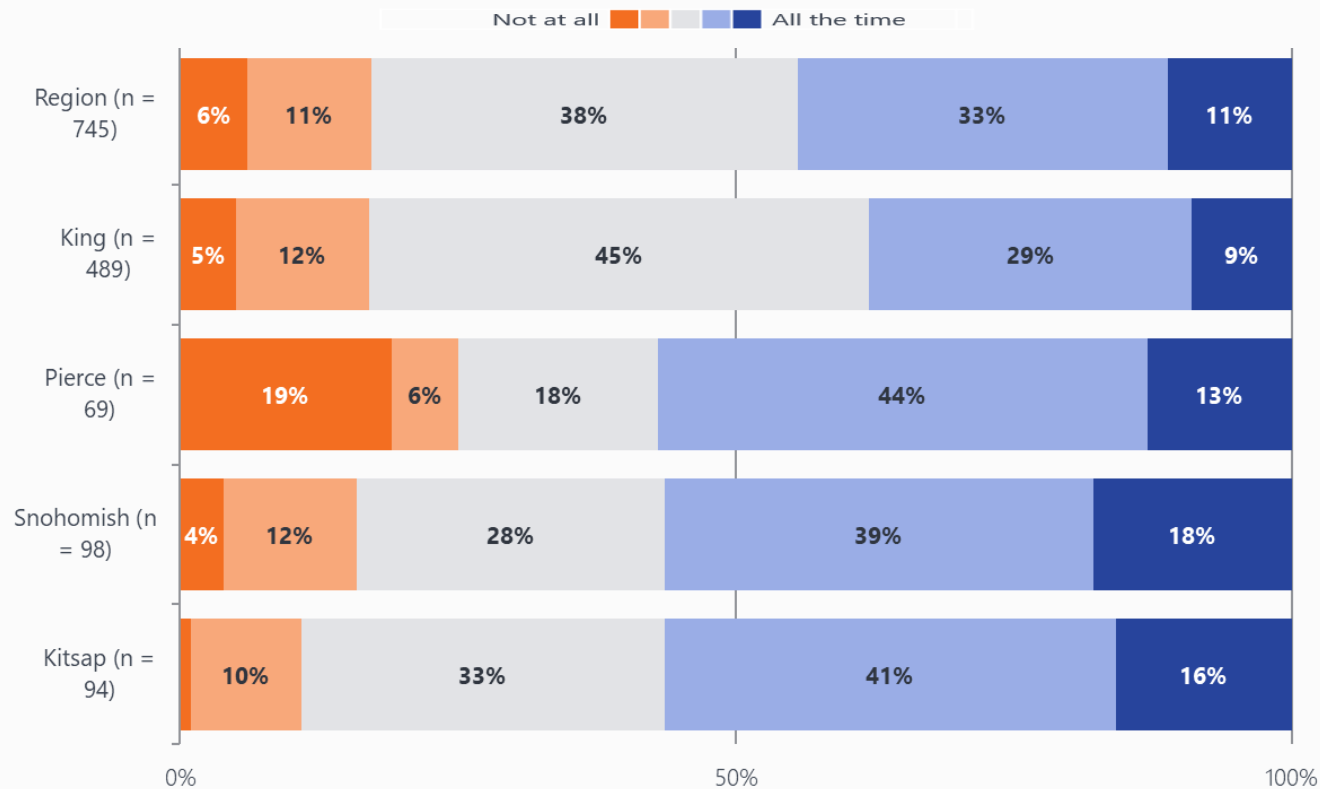
	King	Pierce	Snohomish	Kitsap
Highest rated	<ol style="list-style-type: none"> 1. Transit service 2. Infrastructure for people with disabilities 3. Access to airport 			<ol style="list-style-type: none"> 1. Transit service 2. Conditions of roads, highways, and bridges 3. Traffic flow/travel time
Lowest rated	<ol style="list-style-type: none"> 1. Traffic flow/travel time 2. Conditions of roads, highways, and bridges 3. Lighting for sidewalks and roads 	<ol style="list-style-type: none"> 1. Traffic flow/travel time 2. Bike lanes 3. Lighting for sidewalks and roads 	<ol style="list-style-type: none"> 1. Traffic flow/travel time 2. Sidewalks 3. Lighting for sidewalks and roads 	<ol style="list-style-type: none"> 1. Sidewalks 2. Lighting for sidewalks and roads 3. Bike lanes

About 18-37% of respondents do not know how to rate the quality of transit service in the area where they live.



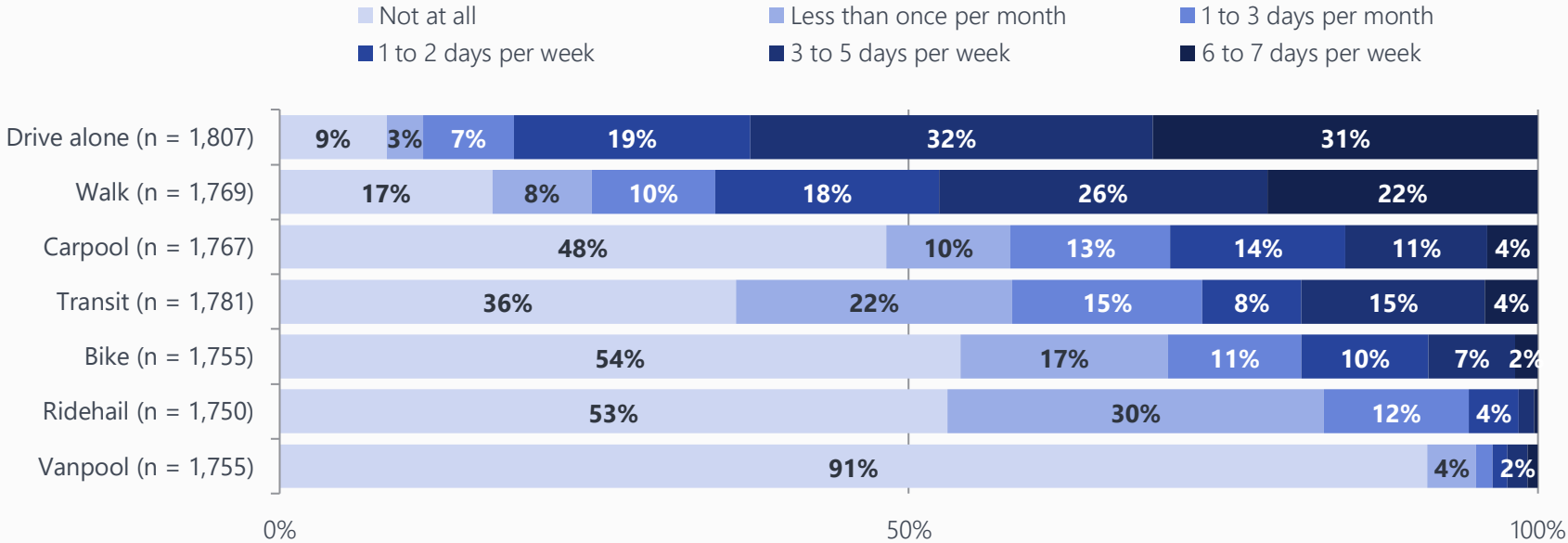
Over 80% of respondents in the region indicate that **they'll work from home at least occasionally** after the pandemic

Work from home after the pandemic:



Across the region, many respondents plan to **drive alone** (63%) or **walk** (48%) at least three days per week after the pandemic.

Frequency of how respondents expect to get around after the pandemic:



Easier access (32-47%) and shorter trip times (29-46%) are most likely to motivate participants to use public transit across the region.

Motivators to use public transit after the pandemic:

King	Pierce	Snohomish	Kitsap
<ol style="list-style-type: none">1. Shorter trip time (46%).2. Easier to access (46%).3. On-time arrivals and departure (30%).	<ol style="list-style-type: none">1. Easier to access (32%).2. Shorter trip time (29%).	<ol style="list-style-type: none">1. Easier to access (47%).2. Shorter trip time (37%).	<ol style="list-style-type: none">1. Extended service (39%).2. Easier to access (35%).3. Shorter trip time (30%).



Interviews



Conducting 25 follow-up interviews to **validate and build upon survey results**

Over 50% of survey participants indicated interest in participating in follow-up engagement

Interviewees are compensated \$125 for their time and expertise



Next Steps

Report of these survey results available soon

Online survey with these and additional questions available – please share!
<https://engage.psrc.org/regional-transportation-plan>

Staff to provide regular updates on outreach to TPB

The screenshot displays a webpage with four survey promotion cards. Each card features a title, a call-to-action button, and social media sharing icons (Facebook, Twitter, LinkedIn, and Email). The cards are as follows:

- Future of Transportation Survey** (English): Button "TAKE SURVEY".
- Encuesta del PSRC sobre el futuro del transporte** (Spanish): Button "COMPLETAR LA ENCUESTA".
- Xog Uruurinta Mustaqbalka Gaadiidka PSRC** (Somali): Button "GAL XOG URUURINTA".
- Khảo Sát về Tương Lai Giao Thông Vận Tải của PSRC** (Vietnamese): Button "THAM GIA KHẢO SÁT".